

ENGINEERING GROUP



ENGINEERING  
by vocation

## DESIGN AND PLANNING

- construction • landscaping • urban planning
- environmental • commercial • fire fighting •
- electrical • thermal/energy • water/sanitary •

## SAFETY

- construction site • environment/work •
- acoustics/environment • machines • training •

## RATINGS

- seismic • industrial risks (Seveso directive)

## CONSULTANCY

- technical and legal advice • ISO 14001 - ISO 9001 - ISO 45001 • credit driving licence •

# Who we are



**stC Engineering group** is an Integrated Engineering company with a team of qualified and specialized professionals in different fields, with over 25 years of experience in design, safety and construction management, both in the public and private sectors.

Using specialists in different sectors, **stC Engineering group** is able to provide 360-degree services in all areas of integrated engineering and architecture. The experience gained in the management of works and in the coordination of safety of large-scale projects, allows the Firm to offer high levels of expertise in the execution of public and private contracts.

**stC Engineering group** is an electrical, thermal and fire protection design studio. Over the years, it has developed high levels of expertise in the world of environmental and urban planning authorizations, in the design of residential, commercial and production buildings as well as in workplace safety.

Our goal is to respond to ALL customer needs, with a multidisciplinary approach, which integrates professionalism and specific skills.

It is an interactive process capable of adapting to different contexts, to develop new and creative solutions. It is not about offering simple options ("turnkey"), but creating a customized and integrated process.



Technical Director  
Ing. Ileano COMIZZOLI



Dott. Ing.  
Angelo CIOCCA



External Relations  
Massimo MASSARA



**stC Engineering group**  
Accredited by the Lombardy Region  
Regional Register of Vocational Education and Training Services

# INTEGRATED ENGINEERING

## DESIGN AND PLANNING

- building
- landscape
- urban planning
- environmental
- commercial
- fire prevention
- electrical
- thermal/energy
- water and sanitation

## SAFETY

- construction site
- environment/work
- acoustics – environmental
- machinery
- training

## ASSESSMENTS

- seismic
- industrial risks (Seveso directive)

## CONSULTANCY

- technical and legal consultancy
- credit license

## building



The PdC or Building Permit is an enabling title that is required for any intervention of building or urban transformation of the territory.

These interventions include:

- New buildings.
- Urban renovations.
- Building renovations.

It is required for interventions that:

- Lead to a building organism different from the previous one (even in part).
- Involve changes to the volume of the building or the facade.
- Involve changes to the intended use.
- Involve alterations to the shape of buildings subject to Legislative Decree 42/2004.

### **CILA (Certified Notice of Commencement of Works)**

It is a certification that is used to carry out minor works that are not classifiable as free building. The following works can be traced back to the CILA:

- Extraordinary maintenance that does not cause structural changes.
- Removal of architectural barriers that change the shape of the building.
- Research work on the characteristics of the land carried out in areas inside the built-up area.
- Earth movements not related to agricultural activities.
- Construction of agricultural greenhouses with walls.
- Construction of minor appurtenances not classifiable as new construction.



## building

### SCIA alternative to the Building Permit

The difference with the normal SCIA is that it can be admitted for more complex interventions, but not so much as to require a building permit.

It is admitted for:

- Heavy renovations.
- New construction interventions carried out in direct execution of general urban planning instruments.
- New construction and urban restructuring interventions regulated by implementation plans.

### SCIA (Certified Notification of Commencement of Activity)

It is a notification that is used for interventions that concern the structural parts of the building, specifically for the operations of:

- Extraordinary maintenance concerning the structural parts of the building.
- Restoration and conservative redevelopment concerning the structural parts of the building.

### The following works can be traced back to the SCIA:

- Do not lead to a building organism different from the previous one.
- Do not involve changes to the volume or the facade of the building.
- Do not change the intended use of the building.
- They do not involve alterations to the shape of buildings subject to Legislative Decree 42/2004.

### Variations to building permits that:

- Do not affect urban planning parameters and volumes.
- Do not change the intended use and building category.
- Do not alter the shape of the building subject to constraints (Legislative Decree 42/2004).
- Do not violate any provisions contained in the building permit.



## real estate valuations



- Real estate appraisal.
- Historical research and specialist reports underlying the appraisal of real estate.

## works management



The management of works of **stC Engineering group** is carried out by professionals registered in the appropriate registers provided for by the current professional regulations. The management of works consists of the coordination, direction and technical-accounting control of the execution of each individual intervention, according to the current legislative and regulatory provisions and in compliance with what is reported in the specifications. The director of works ensures that the works are carried out in a workmanlike manner and in compliance with the project and the contract.

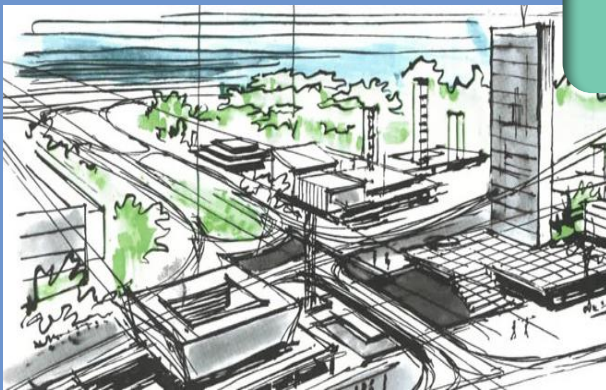


## landscape

### Ordinary and simplified landscape authorization:

The owners, possessors or holders in any capacity, of assets subject to landscape protection, if they intend to carry out works or interventions that involve alteration or modification of the state of the places or of the external appearance of the buildings, must request prior authorization.

Article 146 of Legislative Decree 42/2004 identifies the times and procedure for obtaining landscape authorization. The authorization is effective for a period of five years, after which the execution of the planned works must be subject to a new request for authorization.



## urban planning

General and implementation urban planning, SUAP activities (one-stop shop for productive activities), building regulations, minor water network, urban plan for the management of underground services.



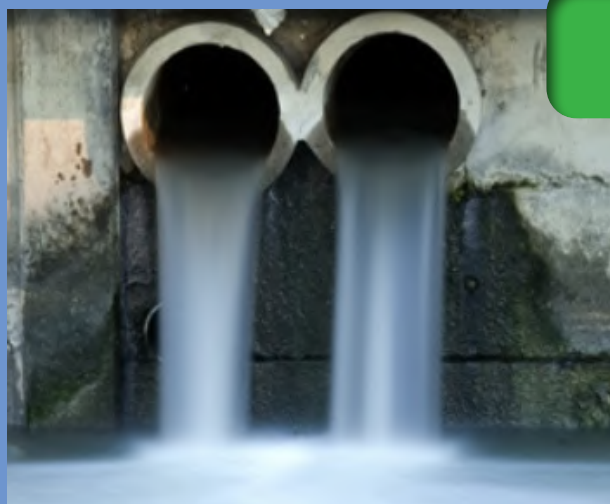
## environmental

Environmental authorizations (AUA-AIA), derogation emissions into the atmosphere, environmental impact assessment (VIA), strategic environmental assessment (VAS), hydraulic invariance checks, characterization plans (remediation) and environmental impact assessments (VINCA).



## waste

- Authorizations for new plants ex art.208 Legislative Decree 152/06
- Renewals of authorizations for existing plants
- Specific consultancy based on customer needs



## sewer discharges

Authorizations for the discharge of wastewater from production activities, delivered both into the sewer system and into a surface water body.





## commercial

SCIA (Certified Notification of Start of Business) for starting, modifying or taking over entrepreneurial activities (artisan, commercial, industrial).



## H.A.C.C.P

In order to implement the REG. CE 852/2004 and Legislative Decree 193/2007 concerning food hygiene, **stC Engineering group**, thanks to expert technicians, assesses the work environment and draws up the self-control manual and the H.A.C.C.P. plan, which must be made available to the competent Bodies in the event of inspections.



## Fire prevention certificate

stC Engineering group is able to provide assistance for the issuing of the Fire Prevention Certificate (C.P.I.), for the activities subject to Presidential Decree 151/2011, taking care of the drafting of the project necessary to obtain the opinion of conformity, the drafting of the requests and certifications. These practices are drawn up by technicians registered in the lists of the Ministry of the Interior Ministerial Decree 5/8/2011 (former law 818).

### At the operational level, the main phases of a typical intervention are the following:

- Technical report indicating the general description of the activity and the description of each process, with particular attention to flammable materials.
- Technical report indicating the structural characteristics of the buildings and compartments, with explicit references to their fire resistance.
- Dimensional check of escape routes.
- Dimensional check of permanent ventilation.
- Creation of plans indicating active and passive fire protection.
- Technical assistance for the intervention works foreseen in the fire compliance opinion.
- Consultations in relation to specific technical problems.
- Preliminary check upon completion of the planned interventions.
- Request for an inspection to the Provincial Fire Brigade Command and collection of all the documentation to be attached to the request.
- Assistance during the Fire Brigade inspection.
- Obtaining Fire Prevention Certificates or technical inspection report depending on the type of activity.
- Renewal of Fire SCIA validated by the Fire Department with CPI or report release, which is valid for 5 years and must be renewed by the deadline to avoid administrative and criminal sanctions.



## fire prevention system design

Every fire-fighting system must comply with the regulations and laws in force and must provide the best technical-economic solution in the exclusive interest of the customer.

**stC Engineering** group proposes itself in the design of fire-fighting systems (pumping stations, sprinklers, hydrant networks, etc.) offering a personalized service for every single need.

Also for fire-fighting systems, the experience and expertise of **stC Engineering** group ensure a truly complete and customer-tailored service.



## emergency and evacuation plans

To complete the purely technical aspects, the emergency-evacuation plan must be prepared for the management of the fire-fighting equipment and devices available to the Client (Legislative Decree 81/08 and subsequent amendments and s.m.i. Ministerial Decree 2/09/2021). **stC Engineering** group supports the Client in the training of the fire-fighting team and in the preparation of emergency and evacuation procedures.



## fire register

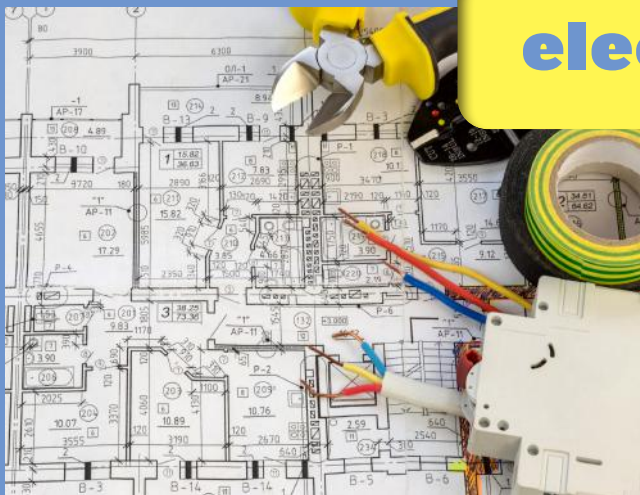


**stC Engineering group** draws up the fire prevention register, which in addition to being mandatory for activities subject to the authorization procedures referred to in Presidential Decree 151/11, is also the necessary tool to demonstrate, pursuant to Legislative Decree 81/08 and subsequent amendments and Ministerial Decree 2/9/21, that the "General criteria for fire safety and emergency management" have been complied with in all workplaces, as it reports in chronological order the actions implemented to maintain general safety conditions, starting from checks and maintenance of fire-fighting systems and equipment.

## fire fighting courses



**stC Engineering group** organizes fire prevention courses (level 1/2/3) with the collaboration of the Provincial Command of the Fire Brigade with the issuing of a certificate of attendance and technical suitability pursuant to Legislative Decree 81/08 and subsequent amendments and Ministerial Decree 02/09/2021.



## electrical design

**stC Engineering group** realizes electrical and photovoltaic projects of any public and private nature.

### ELECTRICAL SYSTEMS

Every electrical system must comply with the regulations and laws in force for its regularity and must provide the best technical-economic solution in the interest of the Client. **stC Engineering group** is able to provide all the technical and regulatory support necessary for the creation of an electrical system «according to the rules of the art», starting from the design, up to the management of the works.

#### At an operational level, the main phases of a typical intervention are:

- Analysis of the documentation produced by the client.
- Acquisition of the client's specific needs that emerged during the investigation carried out by the technicians of our firm.
- Brief description of the systems and the work cycle.
- Preparation of the system layout.
- Schemes of the distribution panels.
- Illustrative report of the planned works.
- Calculations, sizing and coordination of protections.
- Design of safety systems (gas detection - smoke detection - intrusion detection - etc.).
- Drafting of the metric calculation including the characteristics of the necessary equipment and materials.
- Completion of mandatory practices for the relevant bodies.



## classification of places with explosion risk



Classification of places with risk of explosion due to the presence of gas, dust and mist.

The assessment of the risk of explosion includes the drafting of the assessment document in compliance with the provisions of the law, containing the division of the areas in which explosive atmospheres may form, the compilation of the checklist for the verification of existing electrical constructions in the classified areas and the drafting of the verification document with the measures to be adopted for the workplace.

## electrical design works management



The management of works by stC Engineering group is carried out by professionals registered in the appropriate professional registers and consists of the coordination, management and technical accounting control of the execution of each individual intervention, according to the legislative and regulatory provisions in force and in compliance with what is reported in the specifications.

The director of works ensures that the works are carried out in a workmanlike manner and in compliance with the project and the contract.



## electronic register, tests and verifications

stC Engineering group draws up the electrical register of periodic verification pursuant to Legislative Decree 81/08 and subsequent amendments.

**The electrical register contains a detailed guide to maintenance and periodic checks of the system, as required by Presidential Decree 462 of 22/10/2001, of Legislative Decree 81/08 and subsequent amendments and includes:**

### THE FOLLOWING CHECKS:

- Protection of the lines against overcurrents.
- Existence and correct functioning of protection devices.
- Emergency lighting.
- General tripping.

### THE FOLLOWING MEASUREMENTS:

- Insulation resistance of existing lines.
- Earth resistance.
- Continuity of the protection conductor.
- Technical assistance at the systems during inspection visits by the appointed bodies.



## probability of lightning

stC Engineering group performs inspections for risk analysis on the probability of lightning strikes pursuant to Legislative Decree 81/08 and subsequent amendments and CEI-EN 62305.

### STRUCTURE PROTECTION AGAINST LIGHTNING ACCORDING TO CEI-EN 62305

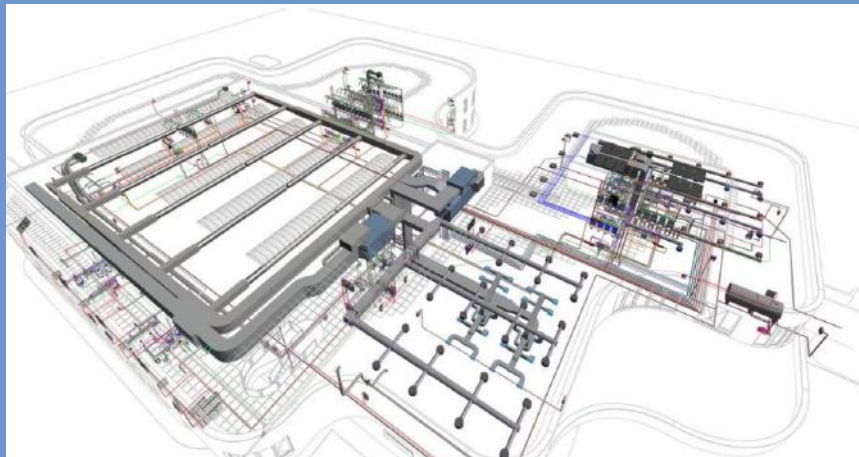
"The system is the cardiovascular system of a building, and it feeds its life over time". System design is the heart of the functionality of a building, which is why experience makes stC Engineering group one of the most established studios in this field. Staff training, passion for design, guarantee the customer 360° safety. Engineering software, certified according to current regional and national regulations, allow a product of competence on the market.

**stC Engineering group is able to propose the most suitable solutions in compliance with the functionality/cost ratio by offering:**

- Design of protection of structures against lightning.
- Choice of the most suitable components for protection.

**N.B.** The document is valid for 5 years and will be modified whenever environmental conditions change or regulatory updates occur.

## thermal system design



"The system is the cardiovascular system of a building, and it feeds its life over time".

System design is the heart of the functionality of a building, which is why experience makes **stC Engineering group** one of the most established studios in this field.

Staff training, passion for design, guarantee the customer 360° safety.

Engineering software, certified according to current regional and national regulations, allow a product of competence on the market.

### **The services offered are related to both public and private properties and include:**

- Design of traditional residential, commercial and industrial heating systems - according to DGR 3868 of 17/07/2015 and subsequent amendments and Ministerial Decree 26/06/2015;
- Design of air conditioning and air treatment systems in the residential, commercial, industrial and hospital/healthcare sectors - according to DGR 3868 of 17/07/2015 and subsequent amendments and Ministerial Decree 26/06/2015 and UNI 10339/2014;
- Design of gas supply systems in the residential, commercial, industrial sectors according to UNI 7129-1:2015, UNI 11528:2014, UNI 11137:2012, UNI EN 15001;
- Drafting of the energy requirements of buildings - according to DGR 3868 of 17/07/2015 and subsequent amendments and DM 26/06/2015.

## air treatment system design



“The well-being of an individual is guaranteed by the quality of the air in the environment in which he carries out his normal daily life”.

The technical team of **stC Engineering group** provides the best plant solutions thanks to: experience, engineering software packages, and collaboration. Numerous and varied experiences in the field make this team of professionals a design marker in every sector, from residential to hospital complex.

### The services include:

- Design of air treatment systems in residential, commercial, industrial and hospital/healthcare settings - according to DGR 3868 of 17/07/2015 and subsequent amendments and DM 26/06/2015 and UNI 10339/2014.



## energy certification

**ATTESTATO DI PRESTAZIONE ENERGETICA DEGLI EDIFICI**  
CODICE IDENTIFICATIVO: 10000000000000000000 VALIDO FINO AL 30/09/2020 **APE**

**DATI GENERALI**

Destinazione d'uso:  
☐ Residenziale  
☐ Non residenziale  
 Classificazione D.F.B. 412/93: **E.L.U.**

Oggetto dell'attestato:  
☐ Intero edificio  
☐ Unità immobiliare  
☐ Gruppo di unità immobiliari  
 Numero di unità immobiliari: **di cui il complesso l'edificio: 3**

Nuova costruzione:  
☐ Passaggio di proprietà  
☐ Locazione  
☐ Ristrutturazione importante  
☐ Riquadrificazione energetica  
☐ Altro:

**Dati identificativi**

Regione: **Foto edificio**  
 Comune: **Subordinati**  
 Indirizzo: **Altro subordinati**  
 Piano: **Altro subordinati**  
 Intero: **Altro subordinati**  
 Coordinate GIS:

Zona climatica:  
 Anno di costruzione:  
 Superficie utile riscaldamento (m²):  
 Superficie utile raffrescamento (m²):  
 Volume lordo riscaldamento (m³):  
 Volume lordo raffrescamento (m³):

Caratteristica costruttiva:  
 Subordinati: **Altro subordinati**  
 Altro subordinati:

Servizi energetici presenti:  
☒ Climatizzazione invernale  
☒ Climatizzazione estiva  
☐ Ventilazione meccanica  
☐ Prod. acqua calda sanitaria  
☐ Illuminazione  
☐ Trasporto di persone e cose

**PRESTAZIONE ENERGETICA GLOBALE E DEL FABBRICATO**

La sezione riporta l'indice di prestazione energetica globale con rinnovabili in funzione del fabbricato e dei servizi energetici presenti, nonché la prestazione energetica del fabbricato, al netto del rendimento degli impianti presenti.

**Prestazione energetica del fabbricato**

INVERNO: **ESTATE**

**Prestazione energetica globale**

Per efficienza:

**EDIFICIO QUASI ZERO**

**CLASSE ENERGETICA B**

**EP<sub>gl,nren</sub> 125,29 kWh/m²/anno**

Riferimenti:  
 Gli indicatori di efficienza energetica in media la seguente classificazione:  
 Se nuovi: **A201,18**  
 Se esistenti: **A201,18**

In terms of Energy Certification, the Lombardy Region was the first Italian region to issue its own laws for the implementation of energy certification on its territory, autonomously implementing Directive 2002/92/EC, in compliance with the constraints deriving from the Community system and the general principles contained in the national implementing legislation (Legislative Decree 192/2005 and subsequent amendments and additions). stC Engineering group hosts qualified technicians registered in the lists of the Lombardy Region and on the national territory, and is able to offer all the regulatory and technical support for the drafting of the energy performance certificate (APE) in accordance with the current regional legislation (DGR 3868 of 17/07/2015).

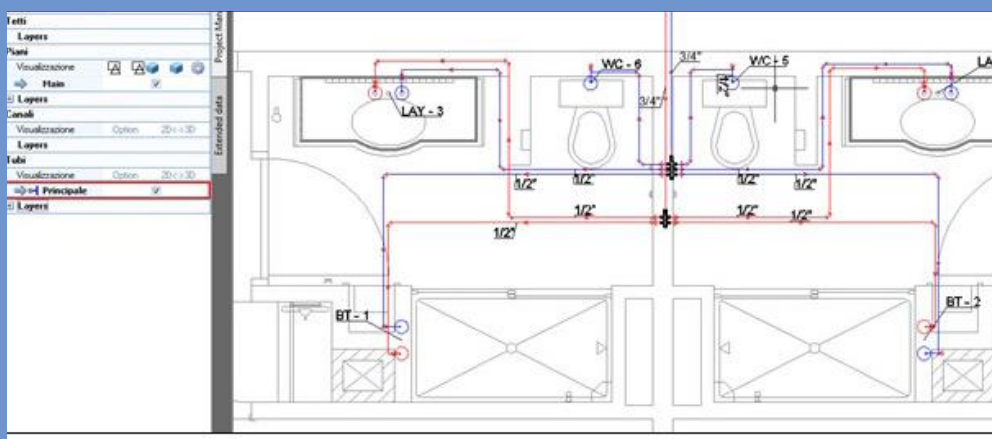
**In Lombardy, the drafting of the APE (Energy Performance Certificate) is mandatory in the following cases:**

- Nuova costruzione (certificazione edificio intero).
- New construction (entire building certification).
- Renovation (entire building certification).
- Volumetric expansion (partial certification or entire building).
- Request for incentives (partial certification or entire building).
- Public buildings.
- Rental (including single real estate units) and lease.
- Transfer of ownership (including single ones).
- Access to incentives and benefits of any kind.
- "Energy Service" or "Energy Service Plus" contracts (including single real estate units).

The certification is valid for 10 years.



## water/sanitary system design



The works management of **stC Engineering group** is carried out by qualified professionals registered with professional associations and consists of: coordination, technical and accounting control of the execution of each individual work, according to the legislative provisions, regulations in force and in compliance with what is reported in the specifications. The Works Management verifies, controls and declares the workmanlike execution of the works carried out, in compliance with the executive project and the contract.

### The design of stC Engineering group includes:

- Analysis of the documentation produced by the client.
- Acquisition of the specific needs of the client that emerged during the investigation carried out by the technicians of our firm.
- Calculation of the requirement according to DGR 3868 and subsequent amendments.
- Sizing of the water/sanitary system.
- Brief description of the system.
- Preparation of the layout of the systems.
- System diagrams.
- Illustrative report of the planned works including calculations and sizing.
- List of unit prices.

## coordinator in the design phase

**stC Engineering group** draws up the Safety and Coordination Plan: it prepares a file containing useful information for the purposes of prevention and protection from risks to which workers are exposed.



## coordinatore in fase di esecuzione



**stC Engineering group** verifies, with appropriate coordination and control actions, the application, by the executing companies and self-employed workers, of the provisions contained in the Safety and Coordination Plan and the correct application of the related work procedures, verifies that the executing companies adapt, if necessary, their respective safety operational plans, organizes cooperation and coordination of activities among the employers, including self-employed workers, as well as mutual information. This position is covered by qualified technicians and supported by a staff with expertise in the subject.

## safety and coordination plan (psc)

**stC Engineering group** draws up the Safety and Coordination Plan pursuant to art. 100 of Legislative Decree 81/08, coordinates the prevention relating to the risks that have emerged with the main figures on the construction site and collaborates constantly, for the entire duration of the construction site, with the designated representatives of the various companies and with the institutional bodies: ASL, Provincial Labor Inspectorate, INAIL. The Safety and Coordination Plan contains the identification, analysis and assessment of risks and the consequent procedures, the estimate of costs, the preparations and equipment suitable for guaranteeing, for the entire duration of the works, compliance with the regulations for the prevention of accidents and the protection of workers' health.

## safety operational plan (pos)



**stC Engineering group** certifies the Safety Operations Plan (POS), which can be defined as the document that the employer of the executing company draws up, in order to establish the prevention and protection measures that it intends to adopt in reference to a specific construction site.

### Minimum Contents of the POS

Annex XV of Legislative Decree 81/08 reports the minimum contents of the POS, which are:

- The identification data of the executing company (the name of the employer, the addresses and telephone numbers of the registered office and the construction site offices).
- The specific activity and individual work carried out on the construction site by the executing company and the sub-contracted self-employed workers.
- The names of the first aid, fire prevention and evacuation personnel and, in any case, of the management of emergencies on the construction site, of the workers' safety representative, company or territorial, where elected or designated.
- The name of the competent doctor where applicable.
- The name of the person responsible for the prevention and protection service.
- The names of the technical director, construction site technical director and construction site manager.
- The number and relative qualifications of the employees of the executing company and of the self-employed workers operating on the construction site on behalf of the same company.
- The specific tasks, relating to safety, carried out on the construction site by each figure appointed for this purpose by the executing company.
- The description of the construction site activity, organizational methods and work shifts.
- The list of scaffolding, wheeled tower bridges and other provisional works of considerable importance.
- The list of machines and systems used on the construction site.
- The list of dangerous substances and mixtures used on the construction site with the related safety data sheets.
- The outcome of the noise assessment report.
- The identification of preventive and protective measures, supplementary to those contained in the PSC when foreseen, adopted in relation to the risks associated with their work on the construction site.
- The complementary and detailed procedures, requested by the PSC when foreseen.
- The list of personal protective equipment provided to workers employed on the construction site.
- The documentation regarding the information and training provided to workers employed on the construction site.

Other contents are instead strictly connected to the specific characteristics of the construction site and the planned work (e.g. description of the activities, organizational methods, etc.), and must therefore be developed and detailed specifically for each construction site in which one is going to operate.

## **PIMUS - drafting of the assembly, use and dismantling plan of the scaffolding**



stC Engineering group draws up the PiMUS, required by Legislative Decree 81/08, which aims to produce a concrete work tool for workers and those in charge of using scaffolding, so that the health and safety of workers is protected, through preventive design choices and detailed illustration of the work procedure. This operational tool must be drawn up every time a fixed metal scaffolding is set up, equipped with a ministerial authorization booklet, regardless of its size and its complexity. However, the structural design of the scaffolding remains mandatory, with a calculation report, drawn up by a qualified engineer, in the event that the scaffolding in question is assembled differently from the ministerial booklet or is integrated with special pieces or of another brand, or exceeds 20 meters in height. The PiMUS must be drawn up before the start of assembly work, as it is a necessary tool for the personnel in charge to proceed with the assembly of the scaffolding itself.



## explosion risk assessment document



**stC Engineering group** is responsible for assessing the risk of explosion according to current legislation, providing for indicating the protection measures. In the event that the document (explosion risk assessment document) detects a risk of explosion, it will be necessary to classify the places with explosion risk.

## exposure to electric and magnetic fields



Electric and magnetic fields can be present in the environment over a wide range of frequencies. The Prime Ministerial Decree of 09/07/2003 sets the limits of the values of electromagnetic fields at 50 Hz in  $3\mu\text{T}$ , for new systems, and in  $10\mu\text{T}$ , for existing systems. These values must be verified by means of environmental surveys or calculations. **stC Engineering group** carries out the assessment according to the analytical calculation method provided for by the CEI 211-4 and CEI 11-60 standards or by means of environmental surveys.

## “vibration” sound surveys in the workplace

**stC Engineering group** thanks to its experience in the field, can provide the best consultancy in the field of prevention-protection of risks in the workplace, accompanying the Employer towards the prompt solution, ensuring the psycho-physical and social well-being of the workers (Title VIII, Chapter I, II and III of Legislative Decree no. 81/2008 - prevention and protection from risks due to exposure to physical agents in the workplace, in particular the work-related risks resulting from professional exposure to noise and mechanical vibrations).







## consultancy and periodic assistance in the workplace

stC Engineering group offers an annual subscription to consultancy and assistance services in the field of health and safety in the workplace.

**stC Engineering group assists the Client in setting up and organizing safety over time, through:**

- Collaboration with the employer for the periodic review Of the risk assessment document.
- Assistance for the implementation of obligations arising from regulatory innovations.
- Assistance in the event of inspections by bodies responsible for workplace safety.
- Performing periodic inspections at workplaces in order to verify the level and maintenance of safety.
- Coordination and participation in the annual periodic meeting with the Employer, the Workers' Representative for Safety, the Competent Doctor and the Head of the Prevention and Protection Service.

## DUVRI

### Single document for the assessment of interference risks

Pursuant to art. 26 paragraph 3 of Legislative Decree 81/08 and subsequent amendments, "obligations related to procurement or supply contracts", the employer promotes cooperation and coordination by preparing a single risk assessment document that indicates the measures adopted to eliminate or, where this is not possible, reduce to a minimum the risks from interference. This document is attached to the procurement or supply contract and must be adapted in accordance with the evolution of the works, services, etc.



## risk assessment document (DVR)

stC Engineering group offers complete and specialized assistance aimed at the preparation of the DVR. The increase in accidents in the workplace has highlighted the need to prepare increasingly significant safety measures for the protection of worker safety (The matter is regulated by Legislative Decree 08/81).

The employer is entrusted with a series of very specific tasks, which cannot be delegated, including the drafting of the Risk Assessment document (DVR), which must be present in the workplace and available for possible examination by the supervisory bodies.



## R.S.P.P.

The person in charge of the Prevention and Protection Service (RSPP - defined by art. 32 of Legislative Decree 81/2008) is the person in possession of the professional skills and requirements, designated by the employer, to coordinate the prevention and protection service from risks, i.e. the set of people, systems and means external or internal to the company aimed at preventing and protecting workers from professional risks.

Legislative Decree 81/2008 reiterates the obligation for companies to designate a Manager of the Prevention and Protection Service from risks. Designating a R.S.P.P. external to the company entails multiple advantages, some of which are

assistance in the assessment of possible risks present in the company such as:

- Noise
- Vibrations
- Atex
- Hazardous Chemicals
- Stress - Work Related
- Electrical manual
- Video Terminals
- Handling
- of loads

## environmental acoustic surveys



**stC Engineering group** is a company that has been present in the area for 25 years and has always dealt with the subject of "Environmental Acoustics". Strength, determination and passion for the environment have led the group to a study and resolution of the most important issues in the field of environmental acoustics.

### **STC ENGINEERING GROUP provides consultancy for:**

- Environmental noise measurements according to L 447/95
- Acoustic impact forecasts for production, commercial and service facilities, according to the provisions of L.447/95, L.R. 13/01 and DGR n. 7477/2017.
- Acoustic climate assessments for residential, school, health and similar facilities, according to the provisions of L. 447/95, L.R. 13/01 and 01 and DGR n. 7477/2017.
- Environmental noise remediation plans for companies, according to the provisions of L. 447/95, L.R. 13/01.
- Evaluation of passive acoustic requirements (R.A.P.E.) of buildings and comparison with the standards referred to in the DPCM 05/12/97.
- Acoustic classification of the Municipal territory according to DPCM 14/11/1997.



## ce marking

### Marcatura CE macchine Regolamento (UE) 2023/1230

Le macchine e tutti gli altri prodotti indicati nel Regolamento (UE) 2023/1230 devono essere marcati CE.

LOGO DEL COSTRUTTORE INDIRIZZO N° DI TELEFONO STATO...	<b>CE</b>
MODELLO - MODEL - MODELL MODELE - MODELO	<input type="text"/>
TIPO - TYPE - TYP TYPE - TIPO	<input type="text"/>
MATRICOLA - SERIAL NUMBER KENN-NUMMER - MATRICULE - MATRICULA	<input type="text"/>
ANNO DI COSTRUZIONE - MANUFACTURING YEAR - BAUJAHR ANNÉE DE CONSTRUCTION - AÑO DE CONSTRUCCION	<input type="text"/>

**stC Engineering Group** provides technical assistance and consultancy aimed at CE marking of machines, collaborates with the Client for the drafting of the technical file and the use/maintenance manual.

It proposes itself as a partner of the manufacturing companies (responsible for the "CE" marking of the products) supporting them at various levels, from the design of the safety systems to consultancy for their supply.

The safety of the machines is, for the manufacturer, an indispensable and fundamental component that must necessarily be considered by a staff of company experts, since the manufacturer is also the guarantor of compliance with the reference regulations.

## machinery adaptation



**stC Engineering Group** with equal expertise, offers its services to user companies to support the process of adapting the machinery in use, starting from an accurate risk assessment, up to proposing the necessary adjustments and measures (installation of safety systems) to reduce the risks themselves and make the machinery compliant with the provisions of Title V of Legislative Decree 81/08.





## training course according to the state- regions agreement

**stC Engineering group** organizes training courses for the various professional figures required by safety regulations. The courses organized concern: safety in the company, first aid, fire prevention (with the collaboration of the Provincial Fire Brigade Command). At the end of the course, each participant is issued a suitable certificate. The safety courses deal with topics that range from information for all workers on issues of general interest, to the training of managers and safety personnel.



## first aid course (DM 388/03)

**stC Engineering group** organizes first aid courses in order to train its employees to deal with health emergencies. At the end of the course, each participant is given a suitable certificate.



## seismic vulnerability

"I never forget that man is the measure of all things" (Santiago Calatrava).

The stC engineering group studio, thanks to the professionalism acquired over the years, offers its expertise in seismic and static matters according to the current NTC2018 regulation.

### SEISMIC VULNERABILITY

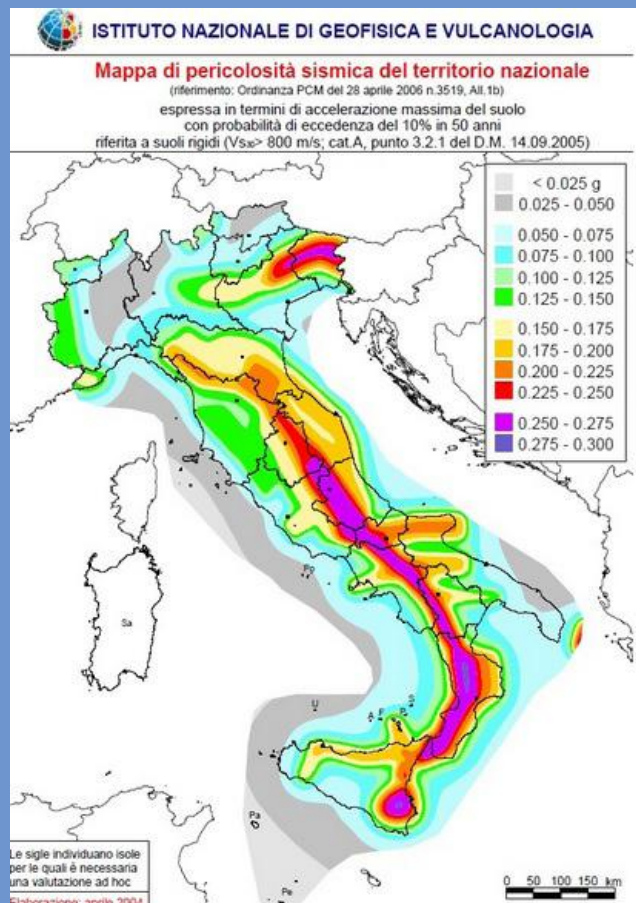
"The seismic vulnerability of a structure consists in the evaluation of the greater or lesser propensity of the structure itself to suffer damage as a result of an earthquake of assigned characteristics".

The seismic vulnerability sheet is defined as the structural identity card of the building, it identifies all its characteristics and is like a "magnetic resonance", it highlights any structural sensitive points and the behaviors in the event of an earthquake.

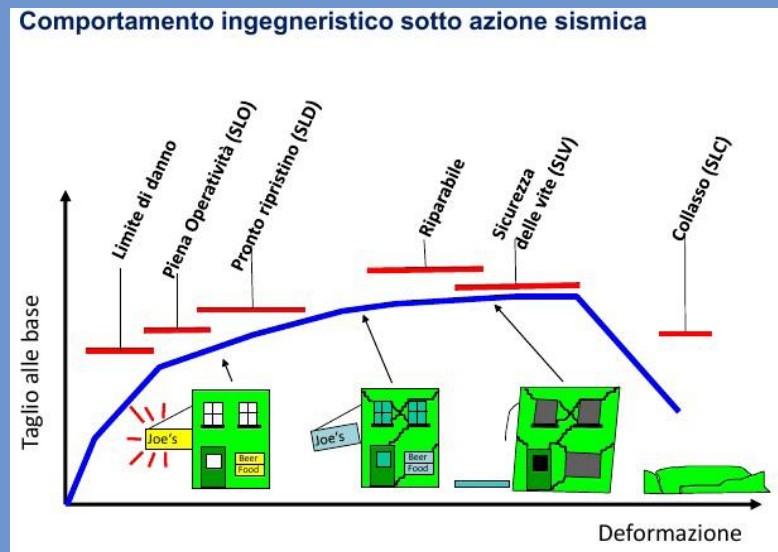
This information allows for the drafting of a maintenance and adaptation plan if necessary.

The building is classified based on the seismic mapping of the site according to the D.G.R. 11/07/2014 n. 2129. Each municipality is classified according to a reference seismic zone.

The seismic design must follow the guidelines of the national NTC 2018 legislation. The summary sheet of the seismic verification of strategic buildings for the purposes of Civil Protection or relevant in the event of collapse following a seismic event follows the guidelines of art. 2 paragraphs 3 and 4, Ministerial Decree 14/01/08 of ordinance n. 3274/2003.



## seismic vulnerability check



Legislative Decree 81/08 and subsequent amendments requires the RSPP to manage the safety of the workplace through a correct risk analysis dictated by the seismic vulnerability understood as risk evolution. The services in this area are summarized as follows, applying the above-mentioned legislation: - Technical report containing the current state of the building and the seismic vulnerability sheets.

## assistance in verification of seismic practices for municipalities

stC Engineering group provides assistance in the exercise of the seismic risk competences transferred to Local Authorities with LR 33, according to the guidelines of DGR 5001/2016.

The Lombardy Region approved resolution no. 5001 of 30 March 2016, which defines the guidelines and coordination for the exercise of the functions transferred to Municipalities in seismic matters, pursuant to art. 3, paragraph 1, and art. 13, paragraph 1, of regional law no. 33 of 2015.

## static check of shelving



The UNI EN 15635 standard "Static steel storage systems. Use and maintenance of storage equipment" establishes the obligation to have an annual inspection of the warehouse equipment carried out by qualified external personnel to reduce risks and potential damage to people and structures and to ensure the correct functioning and compliance with the

logistics department safety standards. The purpose of the regulation is clearly aimed at reducing risks within the warehouse. It is in fact essential to perform periodic inspections with the ability to identify, for example, any damage suffered by the uprights of the racking due to the use of forklifts and other handling equipment. The company

must identify, appoint and adequately train a person in charge of the safety of the storage equipment present within it (PRSES).

During periodic technical inspections of the shelving, the main structural problems that may arise in a warehouse are examined and the intervention for bringing it up to standard is proposed.

Specifically, during the inspection, this series of activities will be carried out:

- Checking the use and maintenance manuals;
- Checking the presence and possible coherence of the load capacity signs;
- Checking the condition of the pavement;
- Checking the coherence of the lanes in relation to the lifting means used;
- Checking the correct storage of the load units;
- Checking and classifying any existing damage;
- Checking the efficiency of the existing shelving;
- Surveying the existing shelving, in the absence of a layout;
- Technical report

## industrial risks (Seveso directive)



stC Engineering group carries out authorization procedures required by Legislative Decree 105/2015 (Seveso III) for establishments at risk of major accidents.

It collaborates with municipal administrations in preparing E.R.I.R. (Relevant Accident Risk Report).

### **At the operational level, the main phases of a typical intervention are:**

- Performance of risk analyses and preparation of technical documentation for lower and upper threshold establishments in accordance with Articles 13 and 15 of Legislative Decree 2015/105.
- Preparation of Safety Management Systems in compliance with Article 14 of Legislative Decree 2015/105.
- Preparation of Internal Emergency Plans in compliance with Article 20 of Legislative Decree 2015/105.
- Assistance to Managers in relations with the Authorities for the preparation of External Emergency Plans (Art. 21 of Legislative Decree 2015/105).
- Information, training and education activities for personnel in accordance with the minimum requirements indicated in Annex B, Appendix 1 of Legislative Decree 2015/105.



## technical-legal assistance



**In the scope of application of the laws on workplace safety and protection of the external environment, it may be necessary to avail of technical/legal consulting for:**

- Assistance in the face of inspection and verbalization by the relevant bodies.
- Assistance in drafting contractual relationships relating to the management of contracts, the purchase of machinery and systems.
- Assistance in the event of accidents.
- Assistance in drafting delegations of functions. In each of these cases, stC Engineering group makes experts available to the Client who reconcile operations with strict compliance with the law.

**ISO 9001, ISO 14001, ISO 45001 – Management Systems that are crucial for establishing and qualifying on the markets.**

ISO 9001 Certification: Quality Management Systems;  
 ISO 14001 Certification: Environmental Management Systems;  
 ISO 45001 Certification: Health and Safety Management Systems;

A certified management system provides the opportunity to differentiate yourself from competitors and respond to customer and market demands.

These certifications also highlight the result of the paths that companies decide to take to provide a guarantee to customers regarding their reliability, the quality of the products and services offered.

ISO certifications represent an important certification for a business that wants to rise above the competition, making use of the appropriate professional tools that prove the compliance of its business process management systems with standards dictated by technical standards.

ISO certifications are a set of international standards that help companies improve the quality of their products and services.

Contact us to define together a strategy tailored to your business and your customers. With our consultancy, you obtain certification in the fastest and most effective way to ensure your company is highly competitive.

ENGINEERING GROUP



[www.gruppostc.it](http://www.gruppostc.it)



**PAVIA**

**St. Veruscka Ciocca 2  
San Genesio ed Uniti  
tel. +39 382 580404**

**ITALY**



**BERGAMO**

**Sq. Marconi 4B  
Bergamo  
tel. +39 35 0400395**

**ITALY**



**MILANO**

**St. Abb. Sangiorgio 21  
Milano  
tel. +39 382 580404**

**ITALY**

[ufficio@gruppostc.it](mailto:ufficio@gruppostc.it)

